



ETELÄ-KARJALAN
IB-LUKIO

SOUTH KARELIA IB WORLD SCHOOL

HANDBOOK 2024 - 2025



**Diploma
Programme**

CONTENTS

Contact details	3
Teachers	5
School year 2024-2025	6
Daily schedule 2024-2025	7
Information for students	7
Guidance and support for students	9
General regulations for IB students at South Karelia IB World School	11
Deadlines	12
Regulations concerning pre-IB and Diploma Programme studies	13
Academic honesty	15
General information about the IB studies	15
Pre-IB subjects and study units	16
Diploma Programme studies	17
Assessment in the IB studies	18
Examinations	19
Diploma Programme internal assessment works and externally assessed works	20
Diploma requirements	23
NOV24 Examination schedule and MAY25 Examination schedule	26
IB Learner Profile	27
IB Diploma Programme	28

CONTACT DETAILS

Imatra Campus (Imatran yhteislukio)

Address Imatran yhteislukio
Koulukatu 2
55100 Imatra

Website www.imatra.fi/iyl
www.iblukio.fi

Principal Johanna Ovaska
johanna.ovaska@imatra.fi
Tel. 020 617 5813

IB Coordinator Sanna Prior
sanna.prior@edu.imatra.fi
Tel.020 617 5712

Office Merja Heiskanen
merja.heiskanen@imatra.fi
Tel. 020 617 5820

Vice Principal Kristiina Heikura
Student counsellor kristiina.heikura@edu.imatra.fi
Tel. 020 617 5727

School nurse Minna Askola
minna.askola@ekhva.fi
Contact and appointments either electronically or by phone 05 352 7260
(Monday – Friday 07:00 - 20:00)

Special educational Tuula Kosma
needs teacher tuula.kosma@imatra.fi
Tel. 020 617 5818

School psychologist Terttu Maula
terttu.maula@ekhva.fi
Tel. 040 502 8184

School social worker Helena Härkänen
helena.harkanen@ekhva.fi
Tel. 040 838 9483

Custodian Jari Haimila
Tel. 044 9016851

Lappeenranta Campus (Lappeenrannan lukio, Lyseo)

Address Lappeenrannan Lyseon lukio
Lönnotinkatu 3
53600 Lappeenranta

Website www.lprlyseo.fi
www.iblukio.fi

Principal Olli Mielonen
olli.mielonen@edu.lappeenranta.fi
Tel. 040 197 0899

Vice Principal Antti Sirkiä
antti.sirkia@edu.lappeenranta.fi
Tel. 040 520 6189

Assistant IB Liina Luukkonen
Coordinator liina.luukkonen@edu.lappeenranta.fi
Tel. 040 7025020

Office Minna Vottonen
minna.vottonen@edu.lappeenranta.fi
Tel. 040 689 5313

Student counsellor Marjo Haapavuo
(IB1 and IB2) marjo.haapavuo@edu.lappeenranta.fi
040 6647930

Student counsellor Satu Komi
(Pre-IB) satu.komi@edu.lappeenranta.fi

040 729 1139

School nurse	Eija Heikkinen eija.heikkinen@ekhva.fi
Special educational needs teacher	Satu Lajunen satu.lajunen@edu.lappeenranta.fi Tel. 020 617 5818
School psychologist	Heini Jakala heini.jakala@ekhva.fi
School social worker	Petra Pusa petra.pusa@ekhva.fi Tel. 0400 672 537
Custodian	Birgit Lindeman Tel. 040 513 672

TEACHERS

Imatra Campus:

Heikura Kristiina	Vice principal, student counsellor
Kihlanki Aapo	TOK
Koho Minna	Finnish A
Kyyrö Heidi	Finnish A, pre-IB homeroom teacher
Maaniittu Sari	English, CAS, IB1 homeroom teacher
Majuri Lydia	Chemistry, IB2 homeroom teacher
Mäkitalo Juha	Mathematics
Nieminen Ari	Mathematics
Prior Sanna	IB Coordinator, History, Economics
Pykäläinen Tapani	Mathematics, Physics

Rutila Jarkko Biology

Lappeenranta Campus:

Haapavuo Marjo	Student counsellor (IB1 and IB2)
Huttunen Jussi	Mathematics
Hyytiäinen Mitja	Chemistry
Hämäläinen Niina	Finnish A , CAS
Kauppi Susanna	Finnish B
Kelloniemi Minttu	Psychology, TOK
Komi Satu	Student counsellor (Pre-IB)
Lakanen Jonne	Physics
Lokka Riikka	Mathematics
Luukkonen Liina	Assistant IB Coordinator, Economics, IB skills
Mattila Jyrki	English A
Roos Marika	Spanish ab initio
Sirkiä Antti	Vice Principal, History
Veistola Tuula	Finnish A

The e-mail addresses of the teachers can be compiled as follows:

Imatra: firstname.lastname@edu.imatra.fi

Lappeenranta: firstname.lastname@edu.lappeenranta.fi

SCHOOL YEAR 2024-2025

Autumn term: 8.8.2024 – 22.12.2024

Autumn break: 21.10. – 27.10. 2024

Christmas break: 23.12.2024 – 6.1. 2025

Spring term:	7.1.2025 – 31.5.2025
Winter break:	24.2.2025 – 28.2.2025
Easter break:	18.4.2025 – 21.4.2025
Ascension Day:	29.5.2025

PERIODS

The school year is divided into five seven-week periods.

1 st period	8.8.2024 – 27.09.2024
2 nd period	30.9.2024 – 26.11.2024
3 rd period	27.11.2024 – 3.2.2025
4 th period	4.2.2025 – 3.4.2025
5 th period	4.4.2025 – 31.5.2025

Autumn break:	21.10. – 27.10. 2024
Christmas break:	23.12.2024 – 6.1. 2025
Winter break:	24.2.2025 – 28.2.2025

EXAM WEEK

At the end of each period, students have an exam week. Pre-DP students have exams in all subjects they study during a period. Diploma students may have summative exams during all exam weeks depending on which level (HL or SL) they study.

RETAKE EXAMS

After each exam week, the students are allowed to rewrite an exam **if they failed it** during the actual exam week or if they were absent for an acceptable reason (e.g. illness).

DAILY SCHEDULE 2024 - 2025

The courses are placed in eight blocks (1-8) in the course tray. The order of the blocks varies during the working days, see below:

LESSON	TIME	MONDAY	TUESDAY	WEDNESDAY	THURSDAY	FRIDAY
1	8.00-9.15	1	6	Joint planning	3	7
2	9.30-10.45	2	7	6	4	6
3	11.00-12.45 11.30-12.45 (Pre-IB LPR+all distant lessons)	4	3	7	5	3
4	13.00-14.15	5	1	2	1	4
5	14.30-15.45	8	Flex	5	2	8

The school is teaching in three 75-minute lessons during the week.

NOTE: Lessons taught via distance learning equipment start at 11.30 (not 11.00).

SCHOOL LUNCH

The lunch hours are 10.45 - 11.30 (on Lappeenranta campus), 11.45-12.15 and 12.15-12.45 (on Imatra campus). For special diets, the students have to give a form to the school kitchen personnel.

INFORMATION FOR STUDENTS

1st - year students are called pre-IB. 2nd- year students are IB1 and 3rd- year students are IB2.

WILMA

Wilma, <https://imatra.inschool.fi> and <https://lappeenranta.inschool.fi/> are the websites of the administration programme at the South Karelia IB World School. Lappeenranta students also follow Lappeenranta Wilma. All-important announcements and news items are given through Wilma.

The students, school personnel, teachers and guardians have a username and a password in order to log in to Wilma. If there are any problems with Imatra Wilma, please fill in the form on www.imatra.fi/ittukipynto

All courses (the course tray) can be found in Wilma and the students can select both IB courses and courses from the national curriculum there. The students see their schedule, follow their grades and contact their teachers through Wilma.

The teachers enter absences and course grades in Wilma. They also contact the students and parents through Wilma.

For Lappeenranta students the pre-IB grades and absences are entered in Lappeenranta Wilma, IB1 and IB2 absences and grades are entered in Imatra Wilma. For Imatra students all grades and absences are entered in Imatra Wilma.

The guardians can follow and explain absences, see the grades and contact the school personnel in Wilma.

Note that students can deny their parents' access to Wilma once they turn 18.

HOME PAGE

South Karelia IB World School has three web pages: www.iblukio.fi, www.imatra.fi/iyl and www.lprlyseo.fi.

GUIDANCE AND SUPPORT FOR STUDENTS

IB COORDINATOR

- informs, guides and supports students before and during their studies
- is responsible for organizing parents' meetings
- ensures that students and teachers fulfil the programme requirements and comply with the general regulations
- registers the students for the final exams
- organizes secure conduct of the examinations, mock examinations, orals and ensures that students obtain their results
- acts as a contact person between the school and the IBO
- confirms and accepts eventual IB subject changes

- As IB Coordinator Marketta works mainly on the Imatra campus, the school also has Assistant IB Coordinator Liina at Lappeenranta campus, who informs, guides and supports students and teachers locally

HOMEROOM TEACHERS

- follow students' studies and absences
- guide students to student counsellor, IB coordinator or school nurse if necessary
- interview all students and take feedback

Homeroom teachers 2024 - 2025:

Imatra campus

Pre-IB: Heidi Kyyrö (C202)

IB1: Sari Maaniittu (C206)

IB2: Lyidia Majuri (C203)

Lappeenranta campus

Jyrki Mattila (104)

Liina Luukkonen (102)

Minttu Kelloniemi (202)

SUBJECT TEACHERS

- follow the performance of students
- advise students in his/her subject
- ensure that students attend lessons regularly and explain possible absences
- inform the homeroom teacher if a student has too many absences or any other problems

PRINCIPAL

- leads the school
- takes ultimate responsibility for the school

SCHOOL SECRETARY

- is responsible for applications for students' financial aid and applications for student cards

- gives copies of school forms and reports

STUDENT SUPPORT

If the students have problems with their studies, please contact one of these persons as soon as possible:

- student counsellor
- special educational needs teacher
- school psychologist
- school social work

GENERAL REGULATIONS FOR IB STUDIES AT SOUTH KARELIA IB WORLD SCHOOL

The aim of the IB Diploma Programme is to develop internationally minded people who, recognizing their common humanity and shared guardianship of the planet, help to create a better and more peaceful world.

IB learners strive to be:

Principled: They act with integrity and honesty, with a strong sense of fairness, justice and respect for the dignity of the individual, groups and communities. They take responsibility for their own actions and the consequences that accompany them.

Caring: They show empathy, compassion and respect towards the needs and feelings of others. They have a personal commitment to service, and act to make a positive difference to the lives of others and to the environment.

Regulations for IB learners at South Karelia IB World School:

1. Attendance

- Attendance is compulsory.
- IB learners are required to be present and punctual.
- By arriving on time for lessons, you show consideration for other people.

2. Absences

Finnish B									
Russian A									
Spanish									
Economics					31.1. (1. commentary draft)	21.2. (1. commentary final)			
History				HI Final Draft 20.12.					
Psychology								15.4. 1 st	26.5. F
Biology									4.5. proposal
Chemistry									
Physics									
MAAN									
MAAP									
EE							21.3 Plan		14.5. outline
TOK exh								8.4. 1 st	19.5. F
TOK essay									

Deadlines can also be found in ManageBac calendar.

- If you cannot meet a set deadline, you must contact the teacher in question at least 3 school days BEFORE the deadline. If you do not do so, the teacher has the right to not accept your work. This includes class assignments (written and oral) and official IB assignments.
- If you miss the official internal deadline of an IB coursework **at draft stage**, you will not be registered for your IB Final Examinations.

- If you miss the official internal deadline of a **final IB coursework**, your first draft will be submitted to the IBO.

Regulations concerning pre-IB and Diploma Programme studies

Regulations for continuing from pre-IB to IB1

- During pre-IB, the minimum of course credits is 60, including the compulsory pre-DP studies and the courses from the school's national curriculum.
- No Ps (missing assignments) or Ks (course interrupted) are allowed after the 5th period assessment
- All pre-DP students need to **have a grade point average of 7,0 for subjects they want to study at standard level and 8,0 for subjects at higher level** (in Mathematics higher level 9,00) in the spring term report.

Regulations for continuing from IB1 to IB2

- **The total grade is not less than 24 in 6 subjects (self-taught Language A candidates 20 in 5 subjects) IN THE SPRING TERM REPORT.**
- No standard level subject grades lower than 2.
- No higher-level subject grades lower than 3.
- All the required written assignments and other tasks set by the IB Faculty completed (following the given deadlines).
- A plan for the EE must be handed in to the supervisor.

Leaving the IB studies or repeating IB1 or IB2

- Contact the student counsellor and the IB coordinator.
- Recommended before the beginning of the new school year.
- Be prepared to rewrite internal assessment assignments.

Changing subjects or subject levels

- Not recommended, but if you have **to change the subject**, do it **by the end of the first period**.
- **Change the subject level by the end of the first period as well.**

- Discuss with the subject teacher before you make the change.
- Contact the DP Coordinator and discuss the change with her.

Exams

- During the exam weeks for national curriculum, you have either a course exam or other tasks depending on the progress of your course.
- Mock examinations are organized in the March of IB2 to practice for final IB examinations. days for IB2 students during the school year in March
- Final IB examinations take place in May of IB2.
- There is a re-take opportunity in the following November.

Academic honesty

- **You are not permitted to copy or use anything without citing the sources.** This also applies to content generated by AI programmes, which should be used with great care and under guidance from your teacher.
- If you copy or plagiarize something without citing:
 1. The first time: the IB coordinator, the principal and your parents will be contacted. You have to rewrite the whole assignment.
 2. The second time: the IB coordinator, the principal and your parents will be contacted. You may not rewrite the assignment and you will lose the points (including not submitting your work to the IB if this is an official IB assignment). The principal also gives you a written warning.
 3. The third time: the IB coordinator, the principal and your parents will be contacted. You may not rewrite the assignment and you will be dismissed from school for two weeks.
 - What happens if you are in breach for the first time? If you are found in breach of the regulations for the second time in the May examinations, this will normally lead to disqualification from participation in any future examination session (IBO: General regulations).

GENERAL INFORMATION ABOUT THE IB STUDIES

The International Baccalaureate Diploma Programme is a demanding pre-university programme for students aged between 16 and 19. It is recognised by universities worldwide. The IBO, the International Baccalaureate Organisation, administers the programme.

At the South Karelia IB World School, the IB Diploma Programme consists of three academic years: the preparatory year (pre-year) and two actual Diploma Programme years (IB1 and IB2 years). During the preparatory year, the students receive intensive training in English and familiarize themselves with the working methods used in the Diploma Programme.

The preparatory year mainly comprises studies that are in accordance with the Finnish national programme. Most of the courses are taught in English to familiarize the students with the vocabulary and terminology of each subject area. In order to familiarize the students with the actual Diploma Programme studies, the pre-IB year will include guidance to IB Diploma Programme requirements, CAS and TOK.

Pre-IB students study approximately 30 courses from the national syllabus, the only difference being the language of tuition. taught in English (except Finnish). If a student does not wish to continue to the Diploma Programme studies, they will have enough courses in order to continue their studies in year 2 in the national lukio.

At the end of the pre-IB year, the students choose the subjects they want to study in the IB programme from the selection of courses in the IB curriculum of the school. The number of subjects is normally six, of which three are studied at higher level (HL, 240 60- minute teaching hours) and three at standard level (SL, 150 60 minute teaching hours). In addition, the students must participate in the CAS programme (Creativity, Activity and Service), take a course in the Theory of Knowledge (TOK) and compile an Extended Essay.

The CAS programme is completed outside the regular schoolwork. It encourages students to be involved in creative pursuits, sports and community service work.

The 100 teaching hours of Theory of Knowledge are divided throughout the two Diploma years. TOK is designed to explore the nature of knowledge across disciplines and to encourage an appreciation of other cultural perspectives. TOK assessment is based on an essay and oral presentation.

The extended essay with the limit of 4000 words acquaints students with independent research and writing skills expected at the university. The essay is supervised by an IB teacher.

PRE-IB SUBJECTS AND STUDY UNITS

SUBJECT	Study units
Finnish	1, 2, 3
Finnish for beginners	1, 2, 3

English	1, 2, 3, 4, 5
Swedish	1, 2, 3
Economics	1
History	1
Psychology	1
Biology	1
Chemistry	1
Physics	1
Mathematics	1, 2, 3, 4, 5
Philosophy	1
Study Guidance + IB Skills	1+1

In addition to these study units, the students take 6-8 study units from the national curriculum, for example B2/B3 languages, Religion, Health Education, Physical Education, Art, Music

DIPLOMA PROGRAMME STUDIES

The students must choose one subject from each of the following groups:

GROUP 1	Language A	Finnish A: Literature HL/SL
		English A: Language and Literature HL/SL
		Eventual self-taught languages SL
GROUP 2	Language B	English B HL
		Finnish B HL/SL
	Language ab initio	Spanish ab initio SL
GROUP 3	Individuals and Societies	Economics HL/SL
		History HL/SL
		Psychology HL/SL
GROUP 4	Experimental Sciences	Biology HL/SL
		Chemistry HL/SL
		Physics HL/SL
GROUP 5	Mathematics	Applications and Interpretation SL

		Analysis and Approaches HL/SL
--	--	----------------------------------

STUDY UNITS FROM THE NATIONAL CURRICULUM

All courses (the course tray) can be found in Imatra and Lappeenranta Wilma. The students select both the IB courses and the courses from the national curriculum in both Wilmas. The students must select IB courses in the first place, because they only are offered once per school year. It is not possible to take courses from the national curriculum if they overlap with IB courses.

ASSESSMENT IN THE IB STUDIES

Each course will be assessed upon completion. The role of assessment is to provide students with feedback on how well they have met the objectives of the course and on their progress in that subject.

THE PREPARATORY YEAR COURSES

In the national Finnish curriculum and in the Pre-Diploma year the scale of grades used in numerical assessment is 4–10.

Grade	
10	excellent knowledge and skills
9	very good
8	good
7	satisfactory
6	moderate
5	adequate
4	fail

A school year is divided into five periods. Each period ends with an examination week after which students receive grades.

DIPLOMA PROGRAMME COURSES

All IB Diploma courses are assessed numerically with a grade for student's skills and knowledge. Theory of Knowledge and the Extended Essay are assessed with the scale A-E. The scale of grades used in numerical assessment is 1-7.

Grade	
1	very poor
2	poor
3	mediocre
4	satisfactory
5	good
6	very good
7	excellent

Numerical grades are given after each period. The students also receive a grade for their effort during the courses. The scale is:

Efforts	
A	excellent performance: very active in class, (home)work always done and positive attitude, helps others
B	good performance: mostly active in class, (home)work nearly always done, positive influence on class
C	satisfactory performance: average activity level in class, (home)work often undone, not very keen on studying
D	poor performance: fairly passive in class even if participates occasionally, (home)work seldom done

These grades are given after each period.

TOK and EE	
A	excellent performance
B	good performance
C	satisfactory performance
D	mediocre performance
E	elementary performance

EXAMINATIONS

Each year Diploma Programme students take part in exams, where all the material studied up to that point is examined. In mock exams the students get used to the form and procedure of the final Diploma Programme examinations.

If you fail an exam, you may rewrite them on certain dates given by the school. **Contact the IB Coordinator and the subject teacher through Wilma at least three days before the examination date.**

The Final IB Examinations take place in May of the second Diploma year. Students have the same timetable and same exams as all IB schools in the northern hemisphere. The exam questions are sent to the school by the IBO and assessed by external examiners.

Students are required to take six subjects to earn their Diploma and the cost of the Final Examinations is covered by the school.

The school will also cover the cost of retake exams until a candidate earns their Diploma (a maximum of two future sessions; the number of retake exams must be discussed with the coordinators)

DIPLOMA PROGRAMME INTERNAL ASSESSMENT WORKS AND EXTERNALLY ASSESSED WORKS

Group 1	Assessment component	Weighting
Language A (May 2021 onwards) Finnish Russian self-taught	HL:	
	Paper 1	35%
	Paper 2	25%
	Higher Level Essay	20%
	Individual Oral	20%
	SL:	
	Paper 1	35%
Paper 2	35%	
Individual Oral	30%	

English A Lang and Lit (May 2021 onwards)	HL: Paper 1 Paper 2 HL Essay Individual Oral SL: Paper 1 Paper 2 Individual oral	35% 25% 20% 20% 35% 35% 30%
Group 2		
Language B	Paper 1 Paper 2 (reading + listening) Individual oral assessment	25% 50% 25%
Language ab initio	Paper 1 Paper 2 (reading + listening) Individual oral assessment	25% 50% 25%
Group 3		
Economics	HL: Paper 1 Paper 2 Paper 3 Commentaries SL: Paper 1 Paper 2 Commentaries	30% 30% 20% 20% 40% 40% 20%
History	HL: Paper 1 Paper 2 Paper 3 Historical Investigation SL: Paper 1 Paper 2 Historical Investigation	20% 25% 35% 20% 30% 45% 25%
Psychology	HL:	

	Paper 1 Paper 2 Paper 3 Experimental Study SL: Paper 1 Paper 2 Experimental Study	35% 25% 20% 20% 50% 25% 25%
Group 4		
Biology	HL: Paper 1 Paper 2 Investigations SL: Paper 1 Paper 2 Investigations	36% 44% 20% 36% 44% 20%
Chemistry	HL: Paper 1 Paper 2 Investigations SL: Paper 1 Paper 2 Investigations	36% 44% 20% 36% 44% 20%
Physics	HL: Paper 1 Paper 2 Investigations SL: Paper 1 Paper 2 Investigations	36% 44% 20% 36% 44% 20%
Group 5		
AA AI	HL: Paper 1 Paper 2 Paper 3	30% 30% 20%

	Exploration	20%
	SL:	
	Paper 1	40%
	Paper 2	40%
	Exploration	20%

DIPLOMA REQUIREMENTS

Grading system

Each academic subject is ultimately graded on a 1 – 7 scale (“1” is very poor, “7” is excellent). TOK and Extended Essays’ assessment uses an A- E scale (“A” is Excellent, “E” is Elementary).

The maximum points a candidate can achieve is 45 (6 x 7 plus 3 bonus points for the combination of TOK and Extended Essay).

The bonus points will be awarded according to the following matrix:

TOK/EE	Grade A	Grade B	Grade C	Grade D	Grade E
Grade A	3	3	2	2	Failing condition
Grade B	3	2	2	1	Failing condition
Grade C	2	2	1	0	Failing condition
Grade D	2	1	0	0	Failing condition
Grade E	Failing condition	Failing condition	Failing condition	Failing condition	Failing condition

The minimum requirement to qualify for the IB Diploma is 24 points, but there are a number of other conditions which must be met to qualify (see below).

However, it is important to remember that to gain acceptance at prestigious institutions or in high demand courses, the student will need to have in excess of 30 points. If a student intends to continue in Higher Education, it is essential to find out the particular requirements

well in advance. A consultation with the Guidance Counsellor at the earliest possible time is strongly recommended.

Award of the diploma

1. All assessment components for each of the six subjects and the additional IB Diploma requirements must be completed in order to qualify for the award of the IB diploma.

2. The IB diploma is awarded based on performance across all parts of the DP.

- Each subject is graded 1–7, with 7 being the highest grade.
- These grades are also used as points (that is, 7 points for a grade 7, 6 points for a grade 6, and so on) in determining if the diploma can be awarded.
- TOK and the EE are graded A–E, with A being the highest grade. These two grades are then combined in the diploma points matrix to contribute between 0 and 3 points to the total.
- CAS is not assessed but must be completed in order to pass the diploma. See section A2.2.2.
- The overall maximum points from subject grades, TOK and the EE is therefore 45: $((6 \times 7) + 3)$.
- **The minimum threshold for the award of the diploma is 24 points.** If a candidate scores less than 24 points, the diploma is not awarded.

3. The additional requirements for the award of the diploma are as follows.

- CAS requirements have been met.
- There is no “N” awarded for TOK, the EE or for a contributing subject.
- There is no grade E awarded for TOK and/or the EE.
- There is no grade 1 awarded in a subject/level.
- There are no more than two grade 2s awarded (HL or SL).
- There are no more than three grade 3s or below awarded (HL or SL).
- The candidate has gained 12 points or more on HL subjects. (For candidates who register for four HL subjects, the three highest grades count.)
- The candidate has gained 9 points or more on SL subjects. (Candidates who register for two SL subjects must gain at least 5 points at SL.)
- The candidate has not received a penalty for academic misconduct from the final award committee.

4. A bilingual diploma will be awarded to a successful candidate who fulfills one or more of the following criteria.

- Completion of two languages selected from the studies in language and literature subject group with the award of a grade 3 or higher in both languages

- Completion of one of the subjects from the individuals and societies, or sciences subject groups in a language that is not the same as the candidate's nominated studies in language and literature language
- Attainment of a grade 3 or higher in both the studies in language and literature language and the subject from individuals and societies, or sciences subject groups

5. The failing conditions for the May 2025 session:

- CAS requirements have not been met.
- Candidate's total points are fewer than 24.
- An N has been given for theory of knowledge, extended essay or for a contributing subject.
- A grade E has been awarded for one or both of theory of knowledge and the extended essay.
- There is a grade 1 awarded in a subject/level.
- Grade 2 has been awarded three or more times (HL or SL).
- Grade 3 or below has been awarded four or more times (HL or SL).
- Candidate has gained fewer than 12 points on HL subjects (for candidates who register for four HL subjects, the three highest grades count)
- Candidate has gained fewer than 9 points on SL subjects (candidates who register for two SL subjects must gain at least 5 points at SL)

6. **There is no limit to the sessions** in which to satisfy the requirements for the award of the IB diploma.

Form of the IB diploma document

1. Successful IB diploma candidates will receive an IB diploma and the document Diploma Results listing the total diploma score, the subject grades, the points awarded for the combination of Theory of Knowledge and the Extended Essay, and the completion of a CAS programme.

2. A bilingual diploma will be awarded to a successful candidate who:

- completes two languages selected from the studies in language and literature subject group with the award of a grade 3 or higher in both languages
- completes one of the subjects from the individuals and societies, or sciences subject groups in a language that is not the same as the candidate's nominated studies in language and literature language
- attains a grade 3 or higher in both the studies in language and literature language and the subject from individuals and societies, or sciences subject groups.

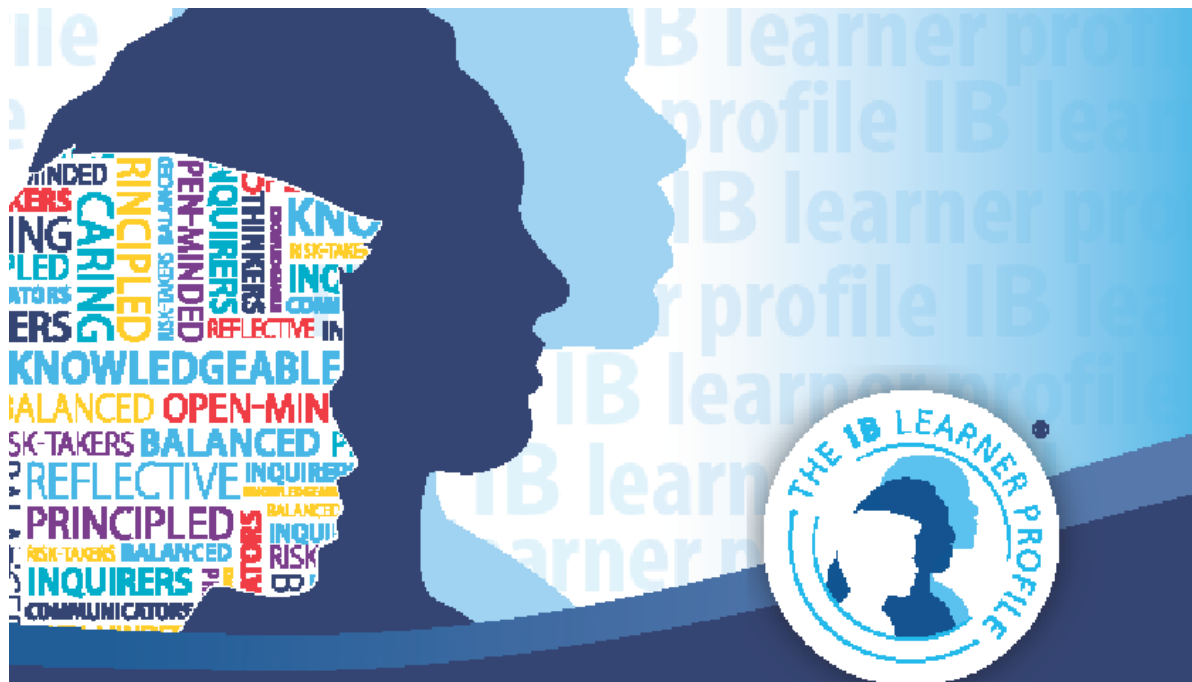
Rewriting a diploma or certificate

A student who has failed the Diploma may rewrite it either in the November session or the following year (May). If the failure is a result of more than two subject scores, the school strongly recommends that the retake take place in the following May session.

The notification for the November session must be made to the IB Coordinator within 14 days of the issuing of the results. Notifications for the following May examination session must be made by the 1st November.

[November2024 examination schedule](#)

[May2025 examination schedule](#)



IB learner profile

The aim of all IB programmes is to develop internationally minded people who, recognizing their common humanity and shared guardianship of the planet, help to create a better and more peaceful world.

As IB learners we strive to be:

INQUIRERS

We nurture our curiosity, developing skills for inquiry and research. We know how to learn independently and with others. We learn with enthusiasm and sustain our love of learning throughout life.

KNOWLEDGEABLE

We develop and use conceptual understanding, exploring knowledge across a range of disciplines. We engage with issues and ideas that have local and global significance.

THINKERS

We use critical and creative thinking skills to analyse and take responsible action on complex problems. We exercise initiative in making reasoned, ethical decisions.

COMMUNICATORS

We express ourselves confidently and creatively in more than one language and in many ways. We collaborate effectively, listening carefully to the perspectives of other individuals and groups.

PRINCIPLED

We act with integrity and honesty, with a strong sense of fairness and justice, and with respect for the dignity and rights of people everywhere. We take responsibility for our actions and their consequences.

OPEN-MINDED

We critically appreciate our own cultures and personal histories, as well as the values and traditions of others. We seek and evaluate a range of points of view, and we are willing to grow from the experience.

CARING

We show empathy, compassion and respect. We have a commitment to service, and we act to make a positive difference in the lives of others and in the world around us.

RISK-TAKERS

We approach uncertainty with forethought and determination; we work independently and cooperatively to explore new ideas and innovative strategies. We are resourceful and resilient in the face of challenges and change.

BALANCED

We understand the importance of balancing different aspects of our lives—intellectual, physical, and emotional—to achieve well-being for ourselves and others. We recognize our interdependence with other people and with the world in which we live.

REFLECTIVE

We thoughtfully consider the world and our own ideas and experience. We work to understand our strengths and weaknesses in order to support our learning and personal development.

The IB learner profile represents 10 attributes valued by IB World Schools. We believe these attributes, and others like them, can help individuals and groups become responsible members of local, national and global communities.



International Baccalaureate
 International Baccalaureate
 International Baccalaureate

© International Baccalaureate Organization 2017

International Baccalaureate® | Focoalburka International® | Focoalburka International®

